

# Level 2 Written Test 2

Name: \_\_\_\_\_

Class: \_\_\_\_\_

Mark: \_\_\_\_\_ / 48

## Q. 1

Circle the beats in these rhythms. Note that you may have to draw a circle through a note.

a.



b.



(4 marks)

## Q. 2

Add barlines to these rhythms.

a.



b.



(4 marks)

## Q. 3

Add time signatures to these rhythms.

a.



b.

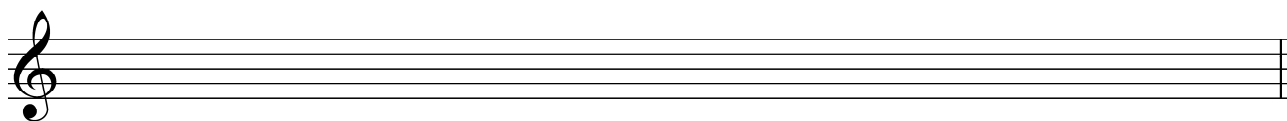


(2 marks)

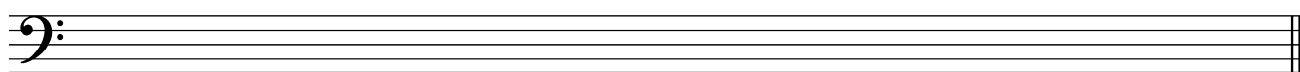
**Q. 4**

Write the following scales.

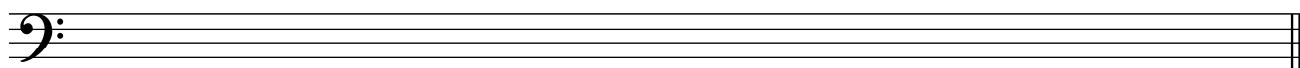
- a. D Major, using a key signature, ascending and descending, in minims.  
Use slurs to show the pairs of notes that are a semitone apart.



- b. G harmonic minor, using a key signature, ascending and descending, in quarter notes.  
Use slurs to show the pairs of notes that are a tone apart.



- c. B $\flat$  *do* Pentatonic, using a key signature, ascending and descending, in whole notes.  
Use slurs to show the pairs of notes that are more than a Major 2nd apart.



(6 marks)

**Q. 5**

Write the tonal names of each of these notes in B harmonic minor.

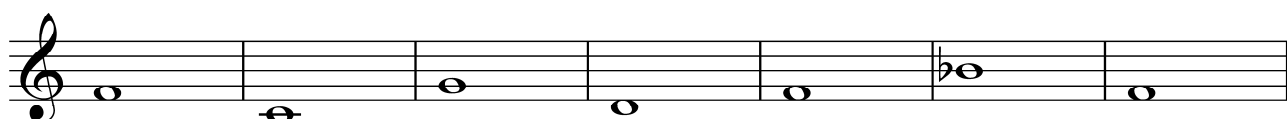


Tonic

(5 marks)

**Q. 6**

Write these intervals above the given notes.



minor 6th

Perfect 5th

minor 7th

Major 7th

Perfect  
Unison

Major 3rd

Major 6th

(7 marks)

**Q. 7**

Name the key of this melody (e.g. C Major etc).

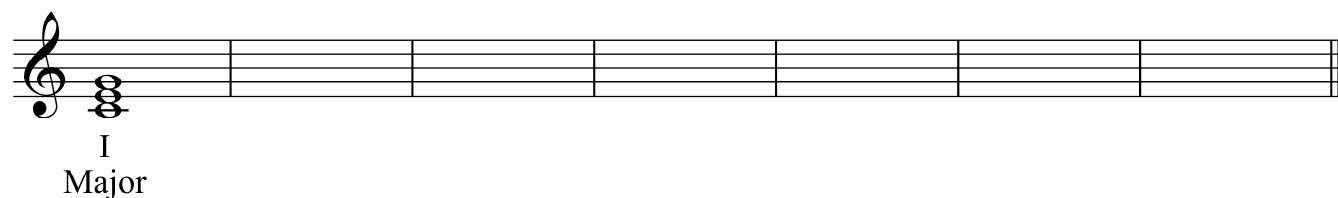


Key: \_\_\_\_\_

(2 marks)

**Q. 8**

Continue the following exercise, writing all the triads created above each note of the C Major scale. Write the Roman Numeral and quality beneath each chord.



(6 marks)

**Q. 9**

Write one Major triad, one minor triad, one diminished triad and one Augmented triad in B harmonic minor (*do* = D). Write the quality and Roman Numeral of the triads you have written beneath each chord.



(8 marks)

**Q. 10**

Complete these statements

**Major Triad:** the bottom interval is a Major 3rd and the top interval is a \_\_\_\_\_.

**Minor Triad:** the bottom interval is a \_\_\_\_\_ and the top interval is a Major 3rd.

**Diminished Triad:** the bottom interval and the top interval are both \_\_\_\_\_.

**Augmented Triad:** the bottom interval and the top interval are both \_\_\_\_\_.

(4 marks)

**Blank manuscript** (if required).

